



USDA Spring Data Users' Meeting
April 19, 2022
Question and Answer Summary

Table of Contents

Open Forum: Question and Answer Summary.....	2
Written Question and Answer Summary.....	27
Presentation Slides	29

Question & Answer Summary

The following is a summary of questions and answers from the Data Users' Meeting. Material is organized based on the order they were answered in the Open Forum. There was not time to answer all questions, but any unanswered questions were reviewed, and the appropriate agency has provided a written response. Answers typed in the webinar Q&A are also included. Slides are appended at the end.

Note: Questions and answers were lightly edited for readability.

Open Forum: Question and Answer Summary

Question: Jerry Gidel

I know it's been a rough transition for everybody in Washington to move have people in Kansas City and things of that nature. I had some issues this last week when we didn't have everything lined up. I know you have been having new transitions or new technology and things like that out there, so I would just like to field a general response from our ERS person on what they feel and how things are working together for us on being able to get oil crops feed crop due to post report type situations. There were some transitional issues that didn't appear like they should have this last week. But that's growing. We all have these issues. I just have to get a response back from you how you feel about how things are going and how this coordination between 2 locations is working out.

Answer: Kelly Maguire

Just to give you a little bit of a lay of the land for ERS, we have about 285 staff right now which is a little bit higher than where we were pre-relocation. So that would have been the October 2019 standpoint. Now, we were low in October 2019. So being at 285 is great. It brings us back up to where we were at that point. We anticipate hiring another 20 or 30 people in the next year or so. That would bring us up to what we would call a full capacity. We have hired all of our management positions down to the first line supervisor. The last first line supervisor starts next week. That is fantastic. And we have filled most of our critical foundational needs, like Outlook economists, for example. So now it's just figuring out what additional capacity we need based on where the needs lie. So that's kind of the logistics of the agency and staffing. We're thrilled that we brought in so many people who have new ideas, fresh perspectives, great energy. So it's an exciting time to be at ERS. The staff that we have hired are folks that are fresh out of graduate school all the way through mid to later in their careers level. Our administrator for example who has been with us now for about 2 years, he was an academic for 37 years and has joined us. Regarding our location. We went to 2 locations in October 2019, Kansas City and Washington DC. Then the pandemic hit and we moved to "remote duty stations," which was a phrase I had never heard of before that time. The Secretary of Agriculture moved the entire department to remote duty stations for positions where those jobs can be done in a remote environment. So going forward, the agency is going to be mostly remote. We will probably have 25 or 30 people who will physically report to offices in Washington DC probably about 40 people who will physically report to the office in Kansas City. The rest of the agency will work from remote duty stations, that being their home. That's the way the department is going and that is not just an ERS decision, it is a move across the department. It works, we've been really productive. We're putting everything out that we're supposed to. Technology makes that a little more seamless than it might have been a couple of years ago. There are hiccups. You noted there were some delays in getting the data that you were talking about from the wheat and oil crops reports uploaded to the Cornell library and ERS. I think those things have been worked out. We certainly take note of those situations

when they occur so we can make adjustments going forward. The final thing I will say, with all of the new talent coming in, we are working on ways to make our data more available and accessible to folks. We have an Outlook modernization project where we are pilot testing new ways to make our outlook products available. That's something we are in the process of working on now.

Question: Paul McAuliffe

Can you explain why WASDE did not change the April 8 U.S. and Ukraine corn planted/harvested acres or yield given the war in Ukraine that started February 25?

Answer: Mark Jekanowski

Our new year starts in May. What you are seeing in April WASDE, the most recent crops, are the 21-22 crops - the current crop that is still being marketed was harvested back last fall. The war, which started in February, didn't affect the estimate of the crops that were produced last fall. Next month, May, you will see new estimates for production and yield for the U.S. and all of the global countries, for the Black Sea and the rest of the year. For April the crops were harvested. The production occurred. There is no basis on which to change the production estimates from crops that were harvested last fall.

Question: Thomas Rutter

Are "food" and "feed" interchangeable in your world? Are reports available for mycotoxins, for example? My question above refers to safety - feed safety for our livestock.

Answer: Post-meeting follow-up from Joe Parsons

Looks like FDA has jurisdiction on mycotoxins in animal feeds. This appears to be the most recent annual report. <https://www.fda.gov/media/130526/download>

Answer: Post-meeting follow-up from Agricultural Research Service (ARS)

We have a couple of labs (Texas, Georgia, Illinois) where our scientists have programs dedicated to preventing and managing mycotoxins in food and feedstuffs – but not to my knowledge any kind of county, state, or national level reporting (eg, seasonal trends). That said, they may have industry or university contacts that can defer to, as well as address the question of the difference between food and feed. Please feel free to reach out to Jan Suszkiw, ARS Office of Communications jan.suszkiw@usda.gov.

Answer: Written response from Chris Eggerman

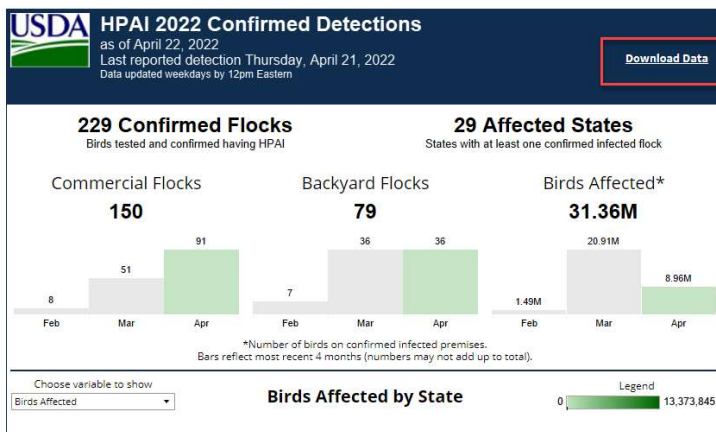
Regarding the question that was asked about mycotoxins in corn, the US Grains Council's corn harvest quality report has some information. Here is the link: <https://grains.org/wp-content/uploads/2021/12/2021-22-USGC-Corn-Harvest-Report.pdf>

Question: Unknown

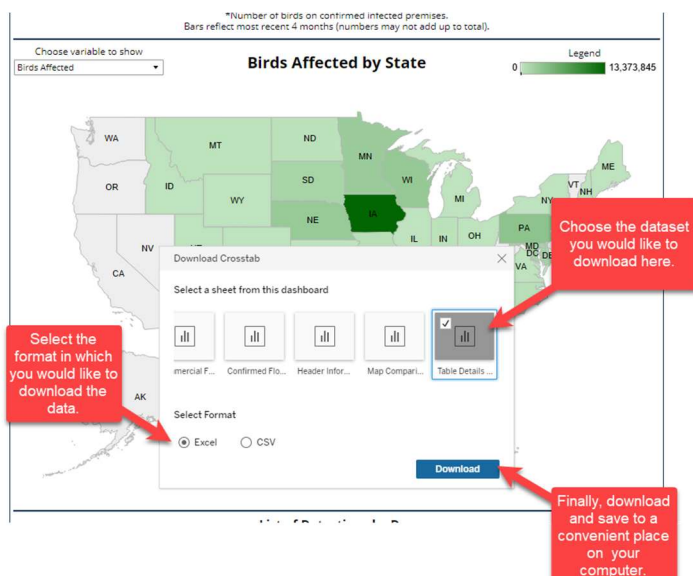
My question has to do with APHIS. I'm not sure if anybody here can cover it. Specifically about bird flu and the data that's provided regularly on occurrences and condemnations and so forth. Would it be possible to have an updated data set that can be easily downloaded and then used? At this point, you have to do a few steps. There's a drop down menu, copy and paste which is basic at this point. So if there could be something provided quickly it would simply make the job of analyzing the data easier and eliminate errors. The other part of it is, if we see any errors in the data, misspelling, is there a way to submit feedback? It seems at this point there's just a reoccurrence there that happens every time I download the data. I have to remember and correct the spelling otherwise it wouldn't work.

Answer: Post-meeting follow-up from APHIS

Regarding downloading the data, there is a “Download Data” button at the top of the [dashboard](#).



If you click this button, a popup directing you to choose the dataset to download and the format of the download will appear.



A description of the tables available for download are below. The most valuable downloads are the tables titled “Table Details by Confirmation Date” and “Map Comparisons” as they give the most one-to-one mapping to the map and table displayed in the dashboard. Some of the other downloadable tables include information in various other summary formats which may or may not be useful for your purposes.

- Table Details by Confirmation Date: (the most useful table) Cell values are birds affected in the given confirm date-county-release state (release date or active) combination
- Map Comparisons: gives the last reported confirmed positive date, total numbers of total flocks, backyard flocks, commercial flocks, and affected birds, across month, by State
- Affected States Total: total number of States with confirmed positive flocks, across month and flock type (including backyard and commercial flocks)
- Backyard Flocks by Month: number of backyard flocks confirmed positive, across State, by month
- Backyard Flocks Total: total number of backyard flocks confirmed positive, across month and State
- Birds Affected by Month: number of birds affected (birds in confirmed positive flocks), across States and flock type, by month
- Birds and States Affected Summary: total number of birds affected (birds in confirmed positive flocks), across month, flock type, and State
- Commercial Flocks by Month: number of commercial flocks confirmed positive, across States, by month
- Commercial Flocks Total: total number of commercial flocks confirmed positive, across month and States
- Confirmed Flocks Total: total number of States with confirmed positive flocks and total flocks confirmed positive, across month, flock type, and State
- Header Information: (not useful, purely artifact information for displaying the data)

Regarding submitting feedback, including any errors in the dashboard or data, we encourage you to submit feedback to APHIS Legislative and Public Affairs at the following email address: CustomerServiceCallCenter@usda.gov. They will be able to direct the feedback to the appropriate team. Note that the dashboard has been designed to minimize the impact on field staff and automate the aggregation of these data from across the States and timeframes so a specific window for correcting any errors can't be guaranteed, but we'll do our best to address any feedback that comes through.

Question: Dale Durchholz

You are putting more emphasis on world crop data at FAS. I am talking about your IPAD app et cetera. We can talk about – the one thing I would suggest is on the main FAS home page there needs to be a more obvious link where we can go from the FAS home right over to those particular venues. It would be a lot more useful to a lot of us out there. With Crop Explorer, I have learned to do a search and jump over. Why hasn't anyone ever addressed putting a direct link in to some of these. Now with what you are doing with world production estimates and the graphics it would be helpful to a lot of people. I think you would get a lot more visibility of them if there was an easy way to directly jump.

Answer: Patrick Packnett

Thank you for that comment. I really appreciate it. I agree with you 100%. This is something we are talking about now working with our folks in public affairs within FAS. In the past, there have been a number of reasons why it had not been done, though I won't bore you with them. It is something we want to do and it's in our short-term plans to better integrate those resources with the rest of the FAS website. I appreciate you raising it. It gives me energy and momentum to take back to Washington to get it done.

Question: Mark Fei

For the trend line yield of corn and beans, do you feel it's more difficult to reach or beat it even with ideal weather, because the marginal increase on seed/planting/machinery technologies is reaching a limitation? Looking forward to see what May WASDE will start with it's yield estimates.

Answer: Mike Jewison

I would reiterate the methodology that we use for corn and beans is published online, a paper I did with Paul Wescott about a decade ago now. Stay tuned for the May WASDE. We are evaluating the current information as best we can.

Answer: Written response from Erik Dohlman

<https://www.ers.usda.gov/publications/pub-details/?pubid=36652>

Question: Jerry Cessna

I have 2 top dairy items on my NASS wish list:

(1) We need better information about processed cheese and dairy products that are very similar to processed cheese. By definition, processed cheese is made from natural cheese. However, there are some dairy products that most people think of as processed cheese, but they made milk protein or other dairy ingredients and may not contain any natural cheese. These include products such as Velveeta, cheese-like slices that put people put on sandwiches, etc. These products are called "cheese product" instead of "processed cheese." It would be good to have

separate reporting for each type of product. This would help us with accounting for how milk components are being used.

(2) It would be good if we had data on stocks of skim milk powder. If there are not enough reporters to report that specific data, perhaps stocks of nonfat dry milk plus skim milk powder could be reported as one aggregate number each month.

Answer: Travis Averill

(1) I'm not sure exactly what he wants detail-wise to ask the producers for the dairy plants to provide for that. We're open to the concept if he can reach out to us and we can talk more about that option where we can provide that data if possible. It goes back to our dairy plants being able to provide the data in a manner that would be able to be published on a monthly and annual basis. Another factor that comes into our reports, is the frequency and volume of the data that would be usable for the end product.

(2) This is a question we have looked into. Unfortunately, we don't have the collaboration from our respondents to provide it in this manner at this time. At this time, the answer is a no although it is something that we will revisit as necessary for the reports.

Question: Kaitlyn McCulloch

When will the following reports will be available through the API? The ones we are looking at right now specifically are the national Bison report the Grass-fed Lamb and Goat report, national Grass-fed Beef report, and the daily ethanol report. The national weekly direct feed type distribution of fed cattle was released in pdf form was not added to the API it was a new pdf. Is that something we should expect going forward? Are pdfs without the data being put into APIs and how do we make distinction. I know I'm asking about MARS and the LMR database in one question. If you could help me out there.

Answer: Post-meeting follow-up from Jason Karwal

The plans for moving the Bison, Grass-Fed Lamb and Goat and National Grass-Fed Beef reports into the API are not finalized. We have other work scheduled for the near future and once that is completed we will determine when these types of reports will be made available in the API. We do not have a timeline for these reports at this time.

The Ethanol reports will be moving into the API within the next 2 months.

The Weekly Direct Feed Type Distribution of Fed Cattle data is not currently available in the API, but there is a CSV file with the data from that report available that updates weekly at the following link. https://www.ams.usda.gov/mnreports/lm_ct200.txt

Not all PDF reports are available in the API. You can pull full lists of reports that are available in the APIs by using the report list queries below on each of the APIs.

- LMR Query for Reports with Data Available in the API: <https://mpr.datamart.ams.usda.gov/services/v1.1/reports>
- MARS Query for Reports With Data Available in the API: <https://marsapi.ams.usda.gov/services/v1.2/reports>

Question: Karl Skold

On the weekly beef and pork shipments and sales reporting. We've had especially on the beef side some fairly large revisions. Those revisions get popped into one week. Maybe what is going on with that both on improving that data and then also why aren't the revisions put in where they should go.

Answer: Amy Harding

We have had some late reporting of pork and beef. We don't go back to prior weeks and correct that information unfortunately. And it is a case sometimes if somebody happens to be out with the exporter company that does their regular reporting, it doesn't get done by an alternate person. It's nothing intentional that we have found. There really is no way to go back to the original time frame in our system to update those figures that happen during a certain time frame prior to when they were reported.

Answer: Patrick Packnett

That's maybe something we could take a look at in the future to see if there is any way within our system or if we are able to upgrade in any way to be able to reflect the sales when they actually occurred rather than when they get reported. Unfortunately, right now it seems that we are not equipped to be able to do it.

Question: Karl Skold

AMS reports the weekly imports for beef and pork and those data are on a PDF unfortunately. I don't know if they are available elsewhere. But maybe is there a way to get those included so we can download the data and get more of an electronic copy rather than just a PDF? The second part of the question is getting more detail on what is being imported across the board on those weekly numbers as well?

Answer: Post-meeting follow-up from Jason Karwal

Can you please specify which report you are referring to? We have a few different reports that have import data. Is it the report at the following link?

<https://www.ams.usda.gov/mnreports/lswimpe.pdf>

You can reach out to mymarketnews@usda.gov with a response to that question and we will provide an answer.

Question: Ryan Nielsen

Regarding NASS quarterly Grains Stocks reports, does there exist a possibility to segregate where off-farm stocks are by industry? ie: ethanol plants/export terminals/county

elevators/feed yards etc. Or is that level of segregation too confidential or too difficult to obtain?

Answer: Lance Honig

No, we are not going to be able to do. You are right. If we try to break the data down that far we will run into all kinds of confidentiality problems and maybe even reporting problems. So at least at this time I don't see that as a possibility.

Question: Don Close

My question is a follow up to Karl's with the weekly export data sales on beef and the cancellation and all of the noise, then we've got the export number that is a part of the comprehensive cut out report that comes out on Monday afternoon and then we have the monthly data that comes from Commerce. None of the 3 align with each other. Which one am I supposed to believe?

Answer: Patrick Packnett

Good question. I don't monitor those other data sets so I'm not sure I can really give you an answer. We do the best we can with the data we get on the export sales reporting. That all comes to us from the industry from the exporters. Often times as you heard Amy noted earlier there are corrections or there are errors that reporters report to us or they report it late.

Answer: Amy Harding

We don't have all of the codes in our data in export sales that Census does in their data. So our figures are not necessarily going to match theirs. That's part of the reason. For instance, there is a lot of different variety of meat and meat products that we do not include in our export sales reporting information.

Answer: Shayle Shagam

Amy is quite correct. We are looking at the AMS data they don't treat Canada and Mexico as exports. So you eliminate some of that. Then as she points out if you are looking especially at the data presented monthly by ERS, it includes processed products. It is not just fresh, chilled and frozen. One is more universal than the others are. There are pros and cons. You get the information quickly. You get it much more rapidly from the weekly than waiting 6 weeks for the monthly Census data. There is also more time for some of the late reporters to get caught up plus there is the annual 13th month on the Census where they look at the past couple of years so see if there is anything they are missing as well. So you are comparing apples and pears. There is a banana thrown in as well by the time you get all 3 agencies in. In terms of which one should you use? It is difficult to say. I tend to look at all 3 of them. 2 of them as an early warning mechanism. The third one is the numbers obviously that you take for the purposes of putting together a forecast.

Question: Katelyn McCullock

Could we consider spreading out the livestock reports on the week before Christmas preferably offer the 3:00 p.m. release on the 23? The last 2 years it's been heavy those days and I don't think you are getting the exposure you deserve on a lost those reports particularly that you are doing stat chat and live streaming. I think it would be better industry wide and for you as well if you moved it off such a time sensitive date and time relative to the holiday. Broiler hatchers look lonely on Wednesday, maybe you could just shift some of those reports over. I know it is tough depending on what day Christmas falls.

Answer: Travis Averill

Happy holidays. Looking at the calendar, the first thing we are always looking at are the data collection days for respondents to provide their data, because if you look at our response rates we are trying to make sure response rates are adequate in coverage there. The shorter you make that the tougher it is for us to get quality data in for our estimates. So that's the key factor there is we are trying to put out the most reliable data possible. We push it to the end so that we can have as much time as possible for our part and try to give people time off for the holidays. It is just by coincidence it is that way. In short years it is even worse. In longer years it's not as bad in the process. But when you are getting December hog data in 10 days of data collection versus a 14 or 15 day window, that's substantial in the process.

Like Katelyn emphasized, we are hosting a #statchat like Dan mentioned earlier. I always encourage people to participate in that. Since I've started no one participates or ask questions. We are trying to be transparent and answer questions that people have regarding those releases as we put them out.

Answer: Dan Kerestes

Do you have a particular suggestion about when you would put those reports out?

Answer: Katelyn McCullock

Tuesday or Wednesday are almost always better. The other thought is you could put it out after Christmas.

Answer: Dan Kerestes

We hate to have people say we are sitting on data, so we try to release the data as soon as possible. That's always been the mission of NASS, collect the data as quickly as you can getting the highest response rate and putting it out to the public and putting it out to the data users whether it is livestock, crops or economics. We want the data users to have those reports as quickly as possible. Sometimes it doesn't fit with the holidays. We apologize for that. But our staff are also trying to spend time with their families. So, we will work with you as much as we can. If anyone does have suggestions, please let any of the Branch Chiefs know and we'll discuss it.

Question: Mark Fei

I've been using some APIs. I've found that some Branches have really nice APIs, for example the FAS U.S export sales. Some branches or agencies don't. What is the API situation and plan in the whole USDA?

Answer: Patrick Packnett

I am happy that FAS has been able to provide APIs for all of our databases as noted by the person asking the question. They have been out there for a while. If people have any input or questions about them, we are usually able to respond and provide some assistance to folks to get them up and running to use the data. I can't speak to what the broader plan is for USDA. We have 3 and they seem to be working pretty well.

Answer: Mark Jekanowski

WAOB is even more simple. We put out the WASDE in 4 formats – .txt, .pdf, Excel and .xml files. We're always open to user feedback if there are other file formats we need to consider or ways to think about giving the public better access to our data, we're open to that. As of now these formats seem to be working well. We will take any feedback that people are willing to provide on that.

Answer: Dan Kerestes

From the perspective of NASS, we need to update Quick Stats and make them better. We need to put more APIs out there. We're in the process of doing that. It is not a quick and easy thing to do. It takes a lot of resources. And that's why for the first landing page that's coming out we chose livestock because it covered so many different bases for us. Regular surveys, ag business surveys, the census of agriculture. There are lots of different ways that we collect the data, so it was our broadest one and we want to take that one first. Once we get that one polished, we will move into economics and into crops. Two of the people that are leading the drive Bryan Combs and Tony Dorn. They are the gentlemen that are leading the big push for all of NASS. We are hoping within the next few years will have it done but it is a big, big task.

Answer: Xuan Pham

ERS has a pilot project in the works now. One of the things that we are explore first is providing information via an API. That will be coming. You currently can get access to -- we do have API at ERS. If you go on Google and type ERS API. We have an API page. I will put the link in the chat for you. You can get our data through API as well right now.

ERS API page: <https://www.ers.usda.gov/developer/data-apis/>

Answer: Mike Walter

I talked about modernization. It is one of the things we've discussed. I would love more feedback. I think in some ways we trend the other way. Our agency is more after the fact data rather than informative data. I would love your feedback if that's more beneficial to provide

data through an API or more beneficial using dashboard tools providing summary data than can be exported.

Answer: Janet Linder

At AMS we are working to add more of our price series into the API. It's a long-term project and each commodity division is being handled separately. But we are making steady progress. A good portion of the dairy price series are already in the API. But we are adding to it as best as we can. Kim Mercer from specialty crops is also on the call to address the specialty crops portion.

Answer: Kim Mercer

By the end of this year we hope to have legacy data for specialty crops as well as livestock will be online with their API for their data. That includes everything that was already in the Oracle system so searchable and then moving on further data will be joining in future years as further enhancements as we move forward. By the end of this calendar year we should have most of our current data available via API.

Answer: Joe Parsons

The heart of the question whether there is an USDA strategy for APIs. The data are so federated I'm not sure you can simply have one universal API to get all of the data from AMS, FAS and NASS et cetera. I think we are working on trying to make our data more accessible such that those APIs are clear about how you get data and how you can pull things directly.

Question: Dale Durchholz

I have a suggestion for Mike. The acreage data you put out monthly starting in August why don't you move it out of the electronic reading room and get it to a more visible spot so people can get to it easier. I have people asking me where did you find that? Just make it more visible.

Answer: Mike Walter

Couldn't agree more. It is one of our top objectives. The person that has been doing that retired. It is now our opportunity as we are transitioning that to somebody else and modernize the process. Fully agree with you.

Question: Dale Durchholz

For the last couple of years as we go through the fall and into the early part of winter and January and February, we always seem to be having huge revisions to weekly export sales of soybeans and we don't see that big significant change in export sales for wheat and corn. My question is why do we seem to be having them for soybeans and not the other two. I understand why you have revisions. But these seem to be unusually large relative to the other products.

Answer: Amy Harding

Other than the fact that export sales are made with future delivery periods most of the time, it may just be that there was not the need for those further out shipments to happen, so they get canceled. Other than that, I don't really have any insight on why that happens.

Question: Dale Durchholz

But the revision that's I normally see in the prior week's numbers seem to be a huge upward revisions they are not cancellations at all. I'm always puzzled why we are seeing a big revision in soybeans yet I don't see it for corn or wheat on prior weekly sales totals. I'm just looking at the aggregate -- the cumulative sales for the year on soybeans for example. When I look at cumulative sales, we are in the spring they are not so big this point around, but when we are in the fall and early winter like October all of the way out into about January sometime, those revisions for the prior week are always huge for beans. I'm talking sometimes 5 to 6 million bushel or maybe more at times. It is always the prior week number that seems to get revised.

Answer: Post-meeting follow-up from Amy Harding

The response to this question is being investigated by the FAS-ESR Team. We would like to have particular examples of the data Mr. Durchholz is referring to if at all possible.

Question: Jim Long

Will crop yield reports going forward at least for 2022/2023 take into account shortage of fertilizer supplies domestically and globally?

Answer: Mark Jekanowski

Our yield modeling processes aren't changing year to year, they are always based on the full set of best information available.

Answer: Mike Jewison

Short answer on that one would be stay tuned for the May WASDE.

Answer: Lance Honig

If you look at the yields forecasted at NASS it will be survey work we do - what you expect your yields to be. Obviously if they have issues with fertilizer availability they would be factoring that into the reporting. The objective yield work we do, we go into those sample fields and take counts, measurements, and send samples to the lab. That would account for any issues such as this. It would be reflected in the results and then last but not least any satellite analysis we do would have the opportunity to reflect that. It wouldn't single out that as a particular issue. Once we get into the game in August for the corn and soybeans there would be an opportunity for us to capture any impact that that may or may not have.

Question: Annie Lorrie Anderson-Lazo

We are conducting a farmer study on land tenure/heirs property, is there a subject matter expert who can speak to us about our survey instrument ? **Clarification:** We are also interested in confirming our understanding of the history of relevant data collection.

Answer: Post-meeting follow-up from Kelly Maguire

We connected the ERS expert, Clayton Michaud, with Ms. Anderson-Lazo.

Question: Alan Brugler

Part of my question a minute ago with the fertilizer impact on yields. The farmer will tell us what the yield is. But I am very interested because this is a known issue how is WAOB going to handle from May, June and July when they are doing it. Part two of that is, what are we doing to raise visibility of fertilizer supplies or measure them or the impact of fertilizer inputs. I know USDA has some input on this. This is a big issue right now and controversy, is it going to hurt the yields or not.

Answer: Mark Jekanowski

If I would go back again and say our guys they are looking at all of the information they have. They are looking at fertilizer markets from every source public and private they can find.

Answer: Mike Jewison

Obviously it is a very delicate subject. There is a wide variance on opinions of the impact. We are obviously evaluating all available sources. As I said with the last question, stay tuned for the May WASDE. The main thing is know they are considering it. It is a big issue.

Answer: Patrick Packnett

We're not really fertilizer experts. Obviously, it is a big issue. We're also looking at the situation. But our folks are participating in the same interagency commodity estimate process. It's a committee effort. We are working with Mike and others. So I don't really have anything more to add with respect to the WASDE estimates on the fertilizer impacts.

Answer: Mike McConnell

I will sound like a broken record. We're evaluating using all of the information we have including the cost of production side. That's one of the additional data sources we are evaluating as we take into account all of the data for the different commodity markets.

Question: Joe Kleinman

Can WAOB provide detailed descriptions of the data used to calculate final exports for each commodity in the WASDE? ie specific HS codes from census or if FAS export sales shipments etc. Can FAS provide the specific source for foreign countries' trade numbers in the PSD dataset?

Clarification: I was not looking for specific HE codes, but rather to indicate if documentation

could be made available to specific sources for the trade data included in the WASDE and PSD reports.

Answer: Post-meeting follow-up from Mark Jekanowski

WAOB understands the need for transparency in the WASDE and reliable documentation of the trade data sources. We will work with the analysts from across the ICEC agencies to compile improved documentation and post it to our website.

Answer: Post-meeting follow-up from Patrick Packnett

Our commodity analysts can speak to individual countries and commodity sources. USDA typically uses foreign countries' official trade data to arrive at final PSD estimates. When data is not available or of uncertain quality, USDA also uses reports from agricultural attachés at U.S. embassies, data from international organizations, publications from individual countries, information from traders both inside and outside a country, and other available information to reach the best estimate. Early season estimates prior to trade data becoming available is forecast based on a variety of information including, the general economic situation, supply and demand conditions, sales information (where available), historical trade patterns, etc.

Question: Eric Moore

My question is about the AMS API. Is the plan to eventually move the legacy historical data some of which is not found on the API to the API? It seems like there is a gradual process of moving some of those reports to the market news API and I'm wondering if there is a schedule or if it is not quite so sophisticated when everything will be eventually available on the API.

Answer: Janet Linder

That is a great question. And thanks for being interested in the API. We're pretty happy with it as a new development. Well, for dairy specifically, I believe we do plan to move a good portion of historical data to the API. But not necessarily things from 50 years ago. So maybe things in a more recent history. I think the same is probably true for some of the other news organizations. Kim can certainly speak to the crops part of it. I think the plan is to certainly get as much on to the API as possible. It is not as formal a thing as a schedule. Some of it has to do with the funding. It takes money to do these enhancements. As the funding is available, we're making plans to move things over as best we can. And our first goal was to obviously get all of the market news divisions present in the My Market News data site. So that's the first thing. Then coming after that will be the enhancements of trying to update the things that are available via the API. I don't know if Kim has something else very wants to add to that.

Answer: Kim Mercer

Specialty crops and livestock have coordinated a little bit on that. Where our current data is complete, we have set a time. I believe it is 2 years for correctable data and I think up to 5 years for complete data to transfer over to the API. It could be as much as ten years depending on resources. We have decided to be consistent on that. It will be a good chunk of data there. We

decided to be consistent there together where the data sets are complete. Again, that's just for legacy data.

Question: Jerry Gidel

The question came up today how the USDA is really approaching this beyond beef, beyond meat type situation. Is there standard data that gives us a feel how that's doing? Is there an area in the meat area that's been dedicated to that situation and that type of thing? It's an area would he have had ups and downs with different products coming into the meat world over the world. This is the most current one. It really does impact what is going on in the industrial side of proteins, things of that nature. Some update in that world that's visible would be I think helpful for both the grain side people and maybe what's going on in beef and meat side of the industry. What kind of idea and things are there. It's probably things I'm not aware of.

Answer: Kelly Maguire

We haven't done anything that I'm aware of but I'll double check when I am done talking with the folks on the line with the beyond meat or alternative meat. But we have with the alternative dairy sources nut milks and things like that. We have a report and chart. I will make sure it gets into the Q&A where we looked at consumption of the alternative milk sources.

Answer: Written response from Jerry Cessna

Amber Waves article on plant-based milk alternatives with reference to more detailed of journal article: <https://www.ers.usda.gov/amber-waves/2020/december/plant-based-products-replacing-cow-s-milk-but-the-impact-is-small/>

Answer: Molly Burress

We have an agreement for plant-based meat. They genetically use the DNA of the meat to make it fabricated in the laboratory. We have 5 agreements, one looking at consumer preferences. The reports are not out yet. I would expect a year or two before publications are released. It is a cooperative agreement that we just started.

Question: Kaitlyn McCulloch

USDA wide, I'm always impressed by how many different products you are putting out across agencies. One of the key things Jim Robb use to bring up how we used to credit USDA for USDA data. How should we as a group be thinking of your data separately, should we try to highlight specific products and your agency when talking about them? How should we as a group be trying to promote your applications and resources?

Answer: Mark Jekanowski

I think a couple of things I would note. It is always good to be cited. Cite the data when you use it. Unlike a lot of the other agencies here on the panel, we're also a data user. We recognize the importance of NASS data, FAS data, and data from across the government. It's all part of what we use to produce the WASDE. I think it's just important to us. It is gratifying to us to see when

our reports are cited, our data is cited. Cite it as the source coming from the WASDE, coming from ERS or NASS. I think it helps us. It helps us with our stakeholders to be recognized in that respect. I'm not sure what else I would add.

Answer: Dan Kerestes

As a minimum if it says USDA that's great. Agency specific after that. We see a lot of our charts and graphics that are used and the USDA is scrubbed off.

Answer: Joe Parsons

It is important to close the loop for the farmers and ranchers. We are asking for their personal information and asking for their time and energy. If they can see the connection between the survey request and insights from the statistics we publish in their favorite farm publication or data from from many of you it makes the case for gaining cooperation easier. I think it helps drive the message that there's value in what they are seeing even if they are not necessarily going to the NASS website or NASS API. Folks will get their data from many, many sources. Often after some analysis and such has been applied from you and your counterparts.

Answer: Kelly Maguire

I was going say something along those lines. We are asked how are the data used. You are asking us to provide all of this data. How is the data used? The more we know how the data are used by different stakeholders it helps us when we are asking folks to provide this information. I would also say we have done this little side project trying to get a better sense of folks that are using the ARMS data. It is so challenging when it is not cited or it's cited in some obscure way to find out if you are going through literature or doing web scrapes to figure out who is actually using the data. That helps us better understand what other questions need to be asked on the survey? Where are there gaps between what the understanding is an what they need? Having that USDA citation is great. We provide a suggested citation. People are not sure how to cite the information. We provide a suggested citation for folks to use.

Answer: Lance Honig

I would suggest citing the agency can be helpful too. Sometimes that speaks to where the data came from and things of that nature. Of course crops is very specific. But I talk to folks a lot making sure they understand the difference between the World Board and NASS because you need to understand that yield you see in May comes from a completely different place than the yield in, NASS forecast in August. There can be value in cited it more specific than USDA.

Question: Andrew Chorniy

Can you please make the morning pork and morning beef reports available via datamart or Mars or API? Right now they're only available on pdf as of 2 years ago. Thx!

Answer: Post-meeting follow-up from Jason Karwal

The morning reports are preliminary numbers and the afternoon are the final numbers released for that day. Currently we only make final numbers available in the API so we are not currently planning to make the morning pork and beef reports available in the API.

Question: Bennett Meier

Does WAOB have plans to extend the history of their WASDE historical database back before 2010?

Answer: Mark Jekanowski

We have the data back prior to 2010. We continue to try to clean up the older data. It gets more complicated the further back you go because the WASDE has changed over time, the tables have changed. The variables that are in the tables have changed. We've been cleaning that up and we do plan to post the entire data set going all of the way back to 1973. At some point we're just not quite there yet. It's a massive undertaking of cleaning that data. And for now we're glad to have it back to 2010. Yeah, we are working ongoing back further.

https://www.ers.usda.gov/webdocs/outlooks/36651/39297_fds-13g-01.pdf?v=8919

Question: Austin Schroeder

It seems like NASS is revising Hogs and Pigs data more times than not, and sometimes by a huge margin. Are you doing anything to improve data collection as to not have so many large revisions?

Answer: Travis Averill

The last 2 years has been a struggle during the pandemic. Trying to get the data reflecting what is actually going on out there has required some revisions. But on sheer magnitude, years ago back during the 2014 time frame I think it was '14, '15 there were large revisions, one of the outbreaks and the impact it had. Every quarter except December goes back to the previous 4 quarters for revisions. So when you are trying to get some of those relationship factors because everything is biological. Some of those biological impacts have to be worked out. That means going back a quarter, 2 or 3 quarters and then when with you get to December where you allow more quarters to be open. Throughout this pandemic with some of the challenges that have been experienced because of slaughter implications, labor, different factors that have been impacting the industry, as you can see the litter rate pre-COVID that was a linear impact that the sows were progressing more live pigs per litter. When the pandemic hit some of the quarters and year comparisons have been minimal changes or down. So the struggle is there too. Labor has been a challenge for the hog producers in the U.S. which causes some of these impacts that we're seeing quarter to quarter. That's why we are trying to make sure the data is most reflective out there for the industry so the decisions and impacts there are what's reality on the farms. I know USDA and some people will say whatever they say about the data, but it relies on

our producers providing us the data so we can get the reliable data out there that can be usable for the industry itself.

Answer: Joe Parsons

Overall we get good cooperation from large hog operations. We document what our procedures are in a quality report on the NASS website including the coefficient variation to describe that uncertainty in the data. So that's a good place to go if you want to learn a little bit more and some details as well.

Answer: Dan Kerestes

The quality measure reports - we are putting out more and more of those. Joe's division is working on those with SD and we're putting out more and more quality measure reports so you can see how good the data is and you can see a measure of that data not just us verbally telling you. We published the sample size and variation.

Answer: Joe Parsons

As we described some qualitative aspects or qualitative aspects of the data. No data are perfect. I would point out if you look at our track records, for example, there's some interesting data to look at to what extent we have had to change between first and final. We have had some recent revisions in hogs for example. If you look over a longer span of time, it gives you a good sense of the revisions we've had to make. That is one aspect of looking at quality. And then I think Dan is talking about our methodology and quality measures. In that we actually have a couple of pieces useful information. One, we describe our survey programs and the survey instruments of which there are many. We describe in the Methodology and Quality Measures some fairly detailed information about what the data collection looked like, what procedures were, how we adjusted for non-response and weighting issues. How we went about editing the data so on and so forth. Finally, we include for a few statistics. We include details on sample size. Both at the national or regional level and also state level. And then some coefficients of variation that describe the statistical uncertainty we have from having a sample and having non-response. And then we also do some weighted measures of coverage and what I mean by that is for example what proportion of the number of hogs in the United States did we actually have to estimate versus collect data directly for our weighted measure of response? So, we have a number of items out there that I think if you wanted to dig a little bit further you can know a little bit more. We're always happy to talk with folks about our procedures. We've expanded that by quite a bit. We still have some to go. We have one out there for grain stocks. I think we talked about that in a breakout session a time or so ago. We've got one out there for hemp, for example.

Answer: Dan Kerestes

You mentioned track reports. We're tracking 20 years' worth of data. It is all out there. If you are one that bases your whole assumption on magnitude of revisions, they are all there for all of

the crops and livestock, major items. We're not hiding anything. Take a look at it and we're always open to suggestions.

Question: Ryan Nielsen

For the FAS GAIN and Attaché reports, I noticed in a recent Brazilian corn Outlook (mainly forecasting preliminary 22/23 S&Ds) the report was released (made public) on the 12th. Within the report the attaché had USDA's official old crop figure as 114 MMT, despite the WASDE showing 116 in the April release on the 8th. Therefore, the question is why was the attaché report not using the most current forecast information? Furthermore, on April 13 for Brazilian soybeans, the attaché report was showing Feb estimates which was a worse 2 months dated.

Answer: Patrick Packnett

Long question but a short answer. It's mostly a timing issue. We do ask our posts to correct to the current WASDE estimates in the USDA official column. But a report may be written prior to the WASDE as in this case but made public after the WASDE and hence would not reflect the latest official estimates.

Answer: Mark Jekanowski

The WASDE reports are the official USDA supply and use estimates for all of these commodities. Sometimes attaché reports can differ based on timing or other factors. The WASDE is the official USDA record.

Answer: Mike Jewison

I just want to reiterate for the record the attaché reports are one of many inputs we look at any given time for the WASDE. It is not the only report we look at it.

Question: Bruno Arthur

Perhaps, a dedicated webpage for detailed ARMS data 1) description / data dictionary, and 2) access / direction would be a good starting point?

Answer: Kelly Maguire

We have a link on how to access the data API and other information on it.

Answer: Post-meeting follow-up from Kelly Maguire

The API can be accessed here: [USDA ERS - ARMS Data API](#)

Question: Dale Durcholtz

You talked about doing some climate change research. What kind of research are you doing and where is it published? How long term of a research are you looking at? Are you looking at something that is the next ten years? Are you talking 20, 30 years out? What kind of things are occurring in that field?

Answer: Kelly Maguire

I have a couple of highlights. We have a couple of models that we have in-house that we run that are great for looking at climate impacts. Usually going out no more than 50 years. So those are things call them economical terms equilibrium models. You tweak one part, and you see how quantities and prices change throughout the world. We have a model that we use that is domestic it is the REAP (Regional Environment and Agricultural Programing) model. It is a mouthful. It is how resources change within the U.S., within the continental U.S., and what it means for agriculture. Those are 2 models. The CGE allows us to look more long term. The domestic model we are looking for short term a few years. So, we've kind of really started thinking about those models. And how we can use those to address climate questions and issues. The parallel is you also need the data to do that as well. It's a dual exercise. It's not just a modeling exercise. It's having the data too. There is a whole host of different questions that one can look at in that space. It takes a little while. So, I would say in the next year or so start looking and we'll have reports out that will show what we are doing in there. The other thing I'll just mention that is useful in this space is a survey that we did a couple of years ago with NASS, the Survey of Irrigation Organizations. This was the first time that a survey like this had been done in 50 years. There used to be a Census of Irrigation Organizations that was last done in 1978 and there was a drought of information. With NASS, we really started looking at this part of the industry, who is supplying water, where are they getting it and where is it going. So, there are a lot of data that are now available on what is going on. We had a sample of about 5000 organizations that we talked to. ERS has been putting out data in that space. We've got about 6 reports, 3 of them are out drilling down in terms of what are the technologies they are using to deliver water? Where is that water going? Where is it coming from? That's really helping to think about the drought aspect of climate change and what that means for drought resiliency and resiliency of the agricultural sector knowing what is going on in the water space.

Answer: Joe Parsons

Around climate and adaptation, the Office of the Chief Economist's Office of Energy and Environmental Policy's William Hohenstein and his team manages a lot of the things and there's a lot of information on the [OCE website](#). Dr. Bill Goldner and Dr. Gretchen Kroh in the [Office of the Chief Scientist](#) also coordinate much of USDA climate and adaptation work. So, you can find a lot of resources there. There is also a discussion about the data needs in order to be able to measure some of these things and understand where we're at and other things in order to measure.

Question: Unknown

Attaché reports are they generated by State Department employees or USDA employees?

Answer: Patrick Packnett

USDA FAS employees. Our American agricultural attachés serve in the embassies. We have a lot of locally employed staff who also work for our agency. They work together with our attachés at the embassies to compile the information contained in our GAIN reports.

Question: Karen Braun

First of all, we're talking about the GAIN reports. I love those. Those are so informative and so useful to learn about just international markets and for anybody that wants to learn about any country and their trade and their production in anything, that is just so helpful, and I've always found that. So, keep up that good work. But with Ukraine I'm just curious do you still have people there on the ground? Are your people in Ukraine? How has the information that you are getting changed? You're going to be estimating the corn crop here in a couple of weeks. Is the information that is going into that this year similar to past years? Then the second part of that question would be about Russia, I know how our presence was reduced there last year. I am wondering how that information has changed and if that has impacted your Russian forecasts at all.

Answer: Patrick Packnett

It is a very fluid situation in Ukraine. There is a lot of sensitivity around what is available and what is not available. I mentioned in my opening remarks that we're using all of the information that we have at our disposal. We have some in country contacts, I can't really say more about that. We're not flying blind. We have our geospatial tools. We have satellite imagery and some high-resolution imagery, along with the geospatial analysis we do. We have not had an official published attaché report from Ukraine since February I believe was the last one. We're using all of the other information we have to produce the best estimates possible. The results will be in the May WASDE. Russia is on an ongoing situation. We talked about it last time we had this meeting. We don't have a presence there anymore. We understand it is an important player in the global grain market. And we're looking at options to be able to collect -- continue to have information available for Russia. If we get some information, we will look at how we can provide that to the external community. It probably won't be traditional public GAIN reports, but if we're able to collect information that we find is useful we can publish it in our commodity circulars or agriculture trade reports that I mentioned earlier.

Answer: Mark Jekanowski

We are relying on the information that FAS is bringing to the table. There is a lot of information out there. To echo Mike Jewison (WAOB Feedgrains Chair), stay tuned for the May WASDE.

Question: Chris Eggerman

For winter wheat acreage estimates released in January, March, and June, is RMA insured acreage used at all as an indicator? Is FSA certified acreage data used before the Small Grains Summary in September?

Answer: Lance Honig

From the RMA side, no, there wouldn't be anything readily available to us for that data that early in the process. We will have it available in time for the small grains summary in September. The FSA certified acreage is certainly available by June for winter wheat and there's

data available there in March as well although it's not as useful at that point because it is still being cleaned and processed as my friend at FSA can tell you. In some places it can be more complete. So, we get some value out of it in March. Nothing in December typically. It is far too incomplete. By the June Acreage report it is pretty good for winter wheat.

A few years ago, FSA changed the way they report cover crop in the certification process. So, cover crops have their own categories. There are 3 different categories. As an example, in years past winter wheat that was planted as a cover crop would have been reported as winter wheat with a cover crop intended use code. That was great for NASS. Now it is reported as a cover crop. There is no indication if it is winter wheat or rye or take your pick. So, any of that acreage that is planted as a cover crop, it is impossible for us to determine what that crop is. So, there's going to be a little bit more gray around area some of those crops like winter wheat that can be used as a cover crop when it comes to interpreting the certified acreage data from FSA.

Question: Jerry Gidel

EIA issues have come up in my analysis of things along the way. I guess it's just surprising that it takes so long to get a final number. The April, early late, March 31 data we finally got the overall data for January. We still didn't get the final, final we didn't get -- guessing in there to get a final look at how much ethanol production we really have in this country on a monthly basis. Right now, we haven't got January's yet because it doesn't come out until the 29th. Last month it didn't come out until the final report. The 1003 number. That's where you get that. So, it is interesting in the fact that the weeklies give us some sense of that. There's been huge adjustments on stocks on a monthly basis. I know that is an issue with all stocks. You have issues back and forth. It seems like to me that the ethanol producers have a better handle on their stocks and to some extent the number of bushels that they -- the bushels come from the USDA. It's actually a month ahead of EIA. So, it is a complicated world out there. I would love to get EIA a little closer to the goal line similar to what we see in the stuff from USDA so we could have a complete set of data. Right now, we still don't have things completed. Here it is the middle of April. We haven't got January's data completed I'm sorry to say. That's my analysis of it. I hope there is enthusiasm in EIA to get faster information.

Answer: Darrin Foltz

Yes, I know speeding up a lot of our data products is of interest to a lot of people. Currently the functionality that would be required to put out things more quickly isn't currently in our systems. And like a few of the other organizations we are also going through modernization efforts and de-siloing some of these products. With that we haven't been able to speed up any of the publication timelines. It is lower on the priority list as we are in a backlog of development. It is a wish for a lot of us at the organization to get things out as timely as possible. We're looking into any of those potential avenues to do that. It is just on the backlog right now.

Question: Ryan Nielson

Just to clarify for the Brazilian oilseeds outlook Attaché report, which was published in April but showing WASDE Official data from Jan and Feb, that was due to a review-delayed timing issue?

If so, should that review period include incorporating the most recent WASDE data? Likewise, if the report was sent back to Brazil, would FAS mention that in the report going forward? Basically, what I am getting at is if the data in the summary tables is dated (by 3-4 months) should we fear the full report is also not up to date?

Answer: Patrick Packnett

I can assure you that our reports aren't dated 3 to 4 months. I think this is a unique situation with the timing. Our attachés working overseas are diligent and committed to what they are doing. I don't think we have a situation where people should be concerned that our reports or the information in our reports are dated.

Question: Tanner Ehmke

One of the crops that we have been following is rice and one of the changes going on. I am wondering if you can collect data on rice the way it is broken out by long grain and the fragrant grains, jasmine. We are seeing some big changes in the industry. There is just not the data there on the acreage to track that or to reveal if there is a change going on at the farm level around if so, how big is it? Is that something you guys track? I know in the past year and a half FAS has done a great job collecting the export and import data for the first time. Can we start collecting data on acreage?

Answer: Kelly Maguire

Rice was the commodity that we surveyed in the ARMS survey this past year.

Answer: Written response from Xuan Pham

ERS has [Rice Yearbook](#) with production data.

Answer: Tony Dorn

Rice was a commodity for the ARMS 2 data. We publish that as far as the chemical use acres applied and then overall acreages. We don't have any breakout information on the different varieties: jasmine, basmati, or anything like that. Our normal highlights will come out May 13, 2022.

Answer: Joe Parsons

You can find our [ARMS questionnaire online](#).

Answer: Written response from Rachel Trego

Several of the Grain and Feed GAIN reports provide information about fragrant rice production and exports.

Question: David Widmar

ERS had a report on fertilizer use and price that's went back decades. The last decade has been sparsely updated. Given the concern around fertilizer usage and price point is there any ability to update that report or do you see any life in that report possibly?

Answer: Post-meeting follow-up from Kelly Maguire

ERS has a Fertilizer Use and Price Data Product ([USDA ERS - Fertilizer Use and Price](#)) that was updated through the last available data, around 2018. And our Feed Grains Outlook report provides some information on fertilizer prices. [USDA ERS - Feed Outlook: January 2022](#). These may be the reports that are of interest.

Question: Emily Balsamo

Are there any plans for data on renewable diesel? Production, pricing, exports.

Answer: Darrin Foltz

Renewable diesel production recently got included in our supply and disposition tables that you can find in our petroleum supply monthly. There is a write up with our notes of our changes and in which tables those break outs were included. In terms of exports, we are not able to capture renewable diesel exports in the trade data as there are no trade codes for that product. We have made attempts to get those codes added, going through the 484(f) committee process but were not successful. We are exploring other alternative methods to capture exports of renewable diesel. We are currently not collecting any pricing information in relation to renewable diesel.

Question: David Widmar

Over the last 2 years you faced changing the crop report. Through the pandemic a lot of issues on objective yields and the way you do it and so forth. Do you see any learning from that process you had to go through, or any sort of thing attached to quality measures you are getting in terms of data?

Answer: Lance Honig

No, I think for us it was a seamless process to be honest. In fact, that was why we were willing to make the changes we did. We had gone back and looked at all of the data sources we had. So, we pretty much knew going into the change that starting objective yield in September versus August for example really wasn't going to have that big of an impact on the quality of the data. So that was seamless. One lesson we did learn - initially we cut the sample sizes back a little more than we felt like we probably would have if we had known going in, so we did boost some of the samples back up on objective yield. I think we are in the neighborhood of 1500 samples each on both corn and soybeans. If you are going to see impacts, you typically find them at the lowest geographic level. If you want to talk about things, we have seen over recent years it is probably more variability when you get down to the state level or if we happen to do county level maybe at that level. Nationally things are holding together very firmly. So even

with some of the sample sizes that we had to adjust on objective yield it was more of a data by state strengthening we had to do with the total counts.

Answer: Joe Parsons

Just to pitch in a little bit the pandemic for data collection has been challenging. It is challenging as an organization. I think for the surveys that we have predominantly conducted by mail or web and phone; we've done very well. Although I will say that the postal service is not as fast as it was. That's caused us to try to adapt our procedures when we mail and how long it takes to get things back. The mail -- we get responses in the web and a lot of responses via the web when we do the census. The tougher part, not surprisingly, are the things like ARM2 survey. All of the trips you made across the field and what fertilizer and chemicals you did. That was really hard to do on the phone. Both for our data collection staff and also for our farmers to be able to respond. It is cognitively difficult. So, we collect some of that data by mail. We are back to doing some limited face-to-face interviewing. We are trying to do that in the right way and do it strategically. Like everybody else we have learned some small things, some big things and we have worked hard to get the job done.

Question: Dale Durchholtz

Considering the interest, we have had shown here over the last 4 to 6 months in SAF, sustainable aviation fuel, also working with a lot of the commentary and a lot of the papers, et cetera, that have come out regarding biodiesel, what kind of things will cover these industries to get a toe hold in it today before we actually get into full blown demand base for fuel like this? What kind of plans did the EIA have in place to start covering this?

Answer: Darrin Foltz

Currently that product is being published in our other biofuels bucket. We are collecting production data under "renewable jet fuel" on our EIA-819 monthly report but as of right now we don't have any plans to break that out in the publications specifically. The 'Renewable Diesel and Sustainable Aviation Fuel Parity Act of 2022' was recently introduced to the Senate, which if signed into law would require EIA to report on production and foreign imports of sustainable aviation fuel. That would require us to go through forms clearance for our imports survey, the EIA-814. It is on our radar. As far as I know the form changes for changes in 2023, they don't include anything with those specific break outs in mind. I'm sure if we got more pressure from other agencies that would be something that maybe we could speed up.

Written Question and Answer Summary

Question: Jim Long

Please provide the link/website for the "IPAD website"

Answer: Written response from Robert Tetrault

The link to the International Production Assessment Division website is:

<https://ipad.fas.usda.gov/>

Question: April Swenson

What is the app called that was mentioned in the AMS Market News agency update?

Answer: Written response from Janet Linder

The app is USDA Market News.

Question: Mark Fei

Mark mentioned the method/model of WASDE yield estimates is published online. Could you provide a link of it?

Answer: Written response from Mike Jewison

https://www.ers.usda.gov/webdocs/outlooks/36651/39297_fds-13g-01.pdf?v=8919

Question: Austin Schroeder

For Cattle on Feed reports, has there been any thought to releasing steer and heifer inventories sorted out on a monthly basis rather than quarterly?

Answer: Post-meeting answer from Travis Averill

There have been no discussions or thoughts to publish the steer and heifer inventories on a monthly basis. As the quarterly process of asking feedlots the class breakout reduces the burden time on a monthly process.

Question: Joe Kleinman

Any chance of NASS breaking out survey response counts by operation size?

Answer: Post-meeting answer from Lance Honig

Not at this time.

Question: Hong Han

Will there be a dashboard for programs (e.g., SMHPP, Pandemic Cover Crop Program, etc.) that came out of the Consolidated Appropriations Act, 2021 (CAA) that similar to CFAP payments?

<https://www.farmers.gov/coronavirus/pandemic-assistance/cfap2/data>

Answer: Post-meeting answer from Mike Walter

There are no immediate plans to post a dashboard for the SMHPP program. FSA is in the process of developing the strategy and operating plans for consistent external dashboard publications in alignment with our data modernization efforts. The Pandemic Cover Crop Program is administered by the Risk Management agency, in speaking with them they had no plans for an external dashboard at this time but the data is available on their Summary of Business app.

Question: Ryan Nielson

Is there a data series for bio energy expansion or investment totals? such that \$x billion spent on industry expansion in 2019 vs. 2020 etc. or # new plants opened / planned in 2021. If so where can I find that?

Answer: Post-meeting answer from Darrin Foltz

While I don't believe we have any data regarding dollars spent on investments, we do have a few reports on production capacity and number of plants that could be helpful. Here are three annual reports that each include excel files for more detailed plant specific information:

<https://www.eia.gov/biofuels/biodiesel/capacity/>

<https://www.eia.gov/petroleum/ethanolcapacity/>

<https://www.eia.gov/biofuels/renewable/capacity/>

While not a data series we had a "Today in Energy" article from July of 2021 related to our STEO (Short Term Energy Outlook) regarding renewable diesel capacity projections that may be useful.

<https://www.eia.gov/todayinenergy/detail.php?id=48916>

The Short Term Energy Outlook can be found here:

<https://www.eia.gov/outlooks/steo/>

Presentation Slides

Following this page are the slides presented during the Agency Updates portion of the Data Users' Meeting.



United States Department of Agriculture
2022 Spring Data Users' Meeting

2022 USDA Spring Data Users' Meeting

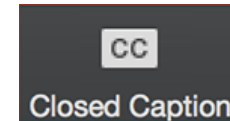
April 19, 2022

Joe Parsons
Chair, Agricultural Statistics Board



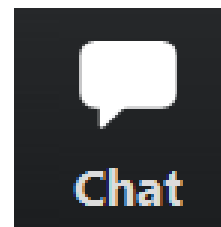
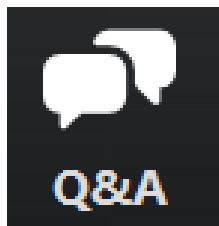
Housekeeping

- Closed captioning available through the Closed Caption button in Zoom.
- The meeting will be recorded and available on our website:
https://www.nass.usda.gov/Education_and_Outreach/Meeting/index.php
- Slides and transcript of Q&A with any additional questions we don't have time to answer will be available on our website after the meeting.
- We will balance questions between the room and online. Attendees in the room will need to use the microphone so that virtual attendees can hear.





Questions/Issues



Q&A – Questions will be answered live by our panelists

Chat – Technical Issues

Email – LaKeya.Jones@usda.gov



Agenda

All Times Central

1:00pm Welcome and Overview

1:10pm Agency Updates

2:15pm Open Forum

2:55pm Break

3:15pm Open Forum Continues

4:15pm Concluding Comments

4:30pm Departure



Panelists

- Patrick Packnett, Foreign Agricultural Service
- Mark Jekanowski, World Agricultural Outlook Board
- Dan Kerestes, National Agricultural Statistics Service
- Kelly Maguire, Economic Research Service
- Mike Walter, Farm Service Agency
- Janet Linder, Agricultural Marketing Service
- Joseph DeCampo, U.S. Census Bureau



Foreign Agricultural Service

Patrick Packnett
Deputy Administrator
Global Market Analysis

World Agricultural Outlook Board

Mark Jekanowski

World Agricultural Outlook Board Chair



World Agricultural Supply and Demand Estimates

ISSN: 1554-9089

Office of the
Chief Economist

Agricultural Marketing Service
Farm Service Agency

Economic Research Service
Foreign Agricultural Service

WASDE - 616

Approved by the World Agricultural Outlook Board

September 10, 2021

Note on Ida: This report includes updated production forecasts issued by the National Agricultural Statistics Service which generally reflect crop conditions as of the first day of the month. The supply and demand impacts of transportation and port disruptions caused by Hurricane Ida are presumed to be temporary based on available information as of September 10, 2021.

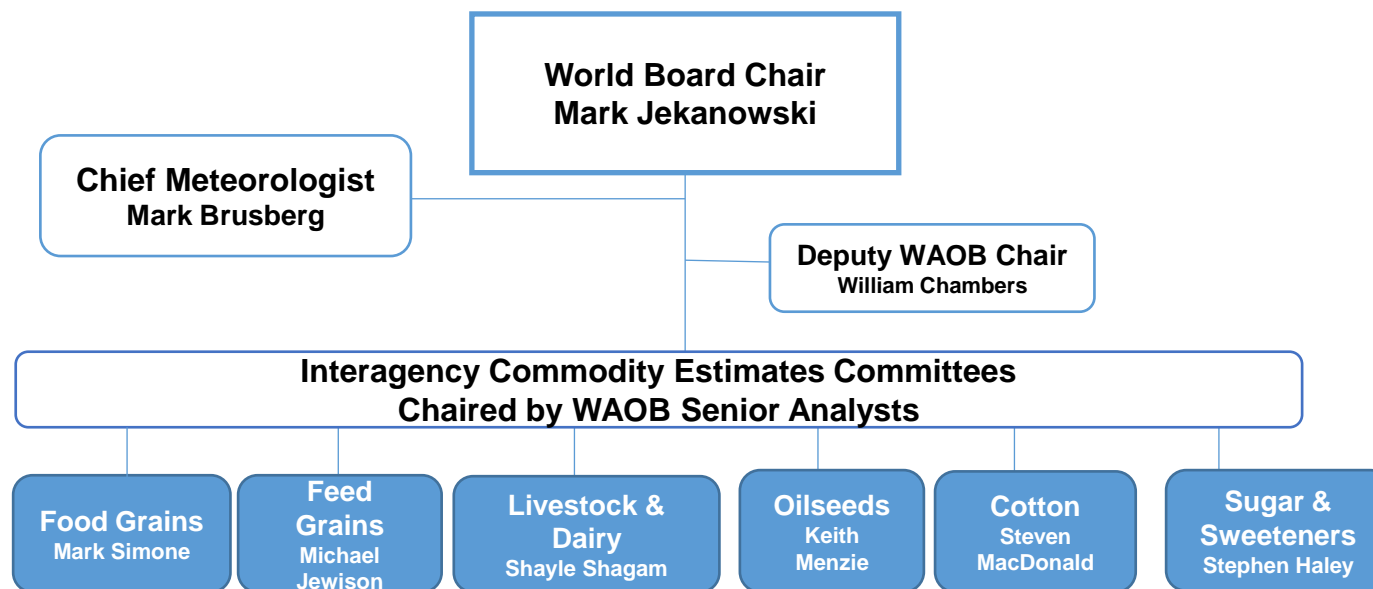
WHEAT: The outlook for 2021/22 U.S. wheat this month is for reduced supplies, slightly higher domestic use, unchanged exports, and decreased ending stocks. Supplies are reduced as imports are lowered 10 million bushels to 135 million on the import pace. Food use is raised 2 million bushels to 964 million, reflecting an upward revision of 2020/21 food use. Exports are unchanged at 875 million bushels but there are offsetting by-class changes. Projected 2021/22 ending stocks are reduced 12 million bushels to 615 million and are 27 percent below last year and the lowest in eight years. The projected 2021/22 season-average farm price is lowered \$0.10 per bushel to \$6.60 on reported NASS prices to date and price expectations for the remainder of 2021/22.

The global wheat outlook for 2021/22 is for increased supplies, higher consumption, more trade, and higher ending stocks. Supplies are projected rising by 7.1 million tons to 1,072.8 million, on the combination of larger beginning stocks for Canada, EU, and India and higher production for Australia, India, and China. Australia's production is raised 1.5 million tons to 31.5 million on continued widespread favorable conditions to date. This would be Australia's third largest wheat crop on record. India's production is increased 1.5 million tons to 109.5 million on the government's 4th Advance Estimate and this would be India's fifth consecutive record crop. China's production is increased 900,000 tons to 136.9 million, mainly on a higher area estimated by the National Bureau of Statistics. Partially offsetting these increases, Canadian production is lowered 1.0 million tons to 23.0 million, based on the Statistics Canada forecast issued August 30, and Argentina is reduced 500,000 tons to 20.0 million on dry conditions.

<https://www.usda.gov/oce/commodity/wasde>

The World Agricultural Outlook Board (WAOB), housed within USDA's Office of the Chief Economist, WAOB serves as USDA's focal point for economic intelligence and the commodity outlook for U.S. and world agriculture:

- Coordinates, reviews, and approves the monthly *World Agricultural Supply and Demand Estimates (WASDE)* report
- Coordinates USDA's Agricultural Outlook Forum



ICECs (Interagency Commodity Estimates Committees)

**ICECs include
analysts from:**

- World Agricultural Outlook Board, Chair
- Agricultural Marketing Service
- Economic Research Service
- Farm Production and Conservation Business Center
- Foreign Agricultural Service

Nine ICEC committees:

Wheat
Rice
Feed Grains
Oilseeds
Cotton
Sugar
Meat Animals
Poultry
Dairy

World Agricultural Outlook Board

Personnel changes

- **Justin Choe: Moved from Feed Grains Economist to Livestock economist**
- **Current Job Openings (To be advertised soon on USAJobs.gov):**
 - **Macroeconomist/ICEC support: GS 13/14**
 - **Commodity analyst (Grains): GS 13/14**

A successful, virtual 2022 Agricultural Outlook Forum

- The 2022 Forum: “New Paths to Sustainability and Productivity Growth.”
- Virtual format for second year.
- Nearly 6,000 participants from government, industry and academia in the U.S. and more than 90 countries.

- The entire event can be viewed here:
<https://www.usda.gov/oce/ag-outlook-forum>

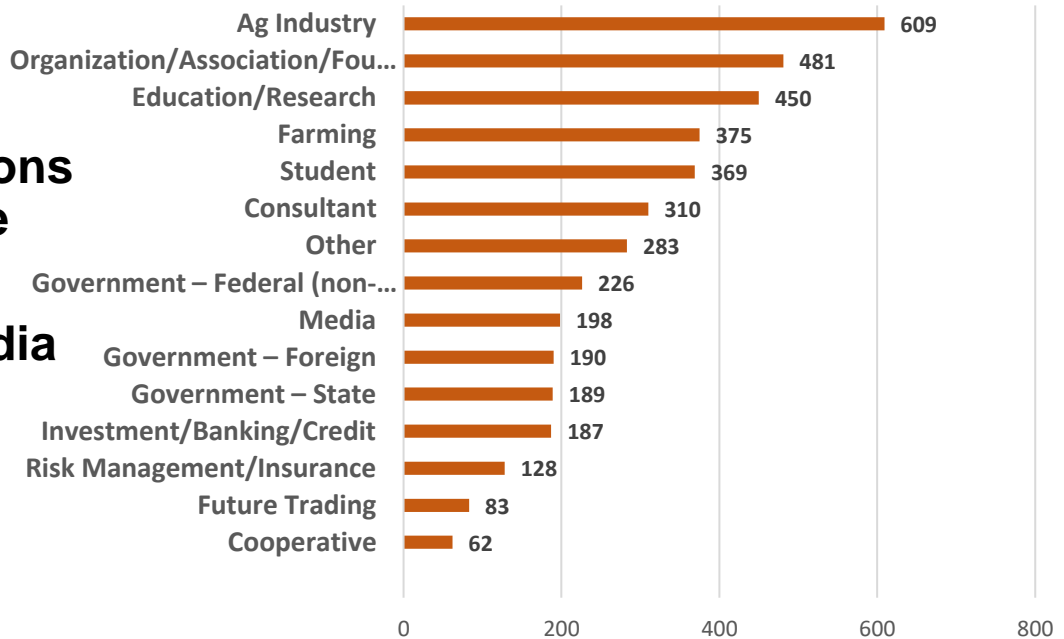
View live on demand here:
<https://www.labroots.com/ms/virtual-event/usda-aof-2022>



Non-USDA Attendees Represented a Wide Range of Stakeholders

- Around 3,800 public (Non-USDA/Government) participants
- Attendees from organizations and businesses across the sector
- Significant increase in media coverage (from 80 organizations in 2021 to nearly 200 in 2022)

Public Attendees



Save the Date!

**Agricultural
Outlook Forum
2023**



- **The AOF 2023 will be held on February 23-24.**
- **We will continue with a virtual presence!**



United States Department of Agriculture
National Agricultural Statistics Service



2022 Spring Data Users Meeting

April 19

Dan Kerestes, Director
Statistics Division

Hemp	<ul style="list-style-type: none">• February 2022• Acreage, yield, production, price and value• Next release – early 2023
Floriculture	<ul style="list-style-type: none">• Expanding to a 50 – state program• Adding 25 new crops• Sales published as retail, wholesale, and total• Published May 25, 2022
Grain Stocks	<ul style="list-style-type: none">• Late 2020 – review of program• Recommendations being reviewed
Live Streaming	<ul style="list-style-type: none">• Secretary Briefings• Crop Production, Acreage, Grain Stocks



What's New - Economics, Environmental and Demographics



Local Foods

- April 28, 2022

Chemical Usage

- Field Crops – May 13, 2022
- Fruit – July 20, 2022

Cash Rents

- State – August 5, 2022
- County - August 26, 2022



What's New - Economics, Environmental and Demographics



Conservation Practices Adoption Motivation Survey	<ul style="list-style-type: none">September 15, 2022Two-year cooperative effort with NRCS
Organics	<ul style="list-style-type: none">December 15, 2022
Live Streaming	<ul style="list-style-type: none">Local Food Marketing PracticesOrganics

Poultry Slaughter

- Condemned Post-Mortem by Cause and Type tables include “unknown”

Livestreaming

- Secretary Briefings
- Hogs & Pigs, Cattle

Stat Chat

- Hogs & Pigs, Cattle

What's New - Census of Agriculture

National Agricultural Classification Survey

- December 2021

Mailing 2022 Census of Agriculture

- Late 2022
- 3 million Farms and Ranches
- On-line reporting
- Previously reported data for online respondents

Respondent Portal

- Central point to respond to all NASS surveys
- Ability to create user account and see past survey responses
- Future – customized homepages
- Future – integration with USDA Farmers.gov website

New Dissemination System

- Dairy landing page - 2022 - Milk production, milk PDI, cattle, cold storage, dairy products, organic data
- Additional landing pages in 2023 - Economics, field crops, livestock, aquaculture
- Future – horticulture, floriculture, demographics, poultry, fruits, nuts and vegetables



All reports available at:	<ul style="list-style-type: none">• www.nass.usda.gov
Questions via phone	<ul style="list-style-type: none">• (202) 720 - 3896• (800) 727 - 9540
Questions via internet	<ul style="list-style-type: none">• nass@usda.gov



United States Department of Agriculture

Supporting Farmers and Rural America through Premier Economic Research

Assistant Administrator Kelly Maguire

USDA Economic Research Service

April 19, 2022

Presentation to the Spring NASS Data User's Meeting

Chicago, IL

Economic Research Service

www.ers.usda.gov





ERS anticipates trends and emerging issues in agriculture, food, the environment, and rural America and conducts high-quality, objective economic research to inform and enhance public and private decision making.





Economic Research Service

U.S. DEPARTMENT OF AGRICULTURE

As one of 13 principal federal statistical agencies, ERS is responsible for ensuring the quality, objectivity, and transparency of the statistical information we provide.



ERS Covers a Broad Range of Economic and Policy Topics

- **Agricultural Economy** – farm sector performance and farm households' well-being; farm size and concentration; market analysis, data, and projections on commodity supply, demand, and prices; and Federal farm policies
- **Rural Economy** – investments in rural communities and drivers of rural economic performance, demographic change and its impact on rural communities
- **Global Markets and Trade** – major markets and competitors, economic impacts of exports and imports, trade barriers, and potential trade agreements



ERS Covers a Broad Range of Economic and Policy Topics

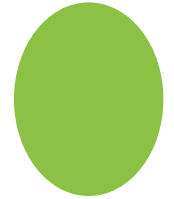
(continued)

- **Food Safety** – societal benefits associated with reducing food safety risks, economic impacts of food hazards, and potential results of regulation versus industry decisions
- **Food and Nutrition** – U.S. food security, food and nutrition assistance programs, food choices and health outcomes, food access and store proximity, food retailing and marketing, and food prices
- **Resources and Environment** – economic impacts of conservation programs, efficacy of policies designed to protect the environment, and enhancing agricultural competitiveness through technology



ERS Foundational Data Supports Research & Analysis

- **The Agricultural Resource Management Survey (ARMS):** is USDA's primary source of information on the financial condition, production practices, and resource use of America's farm businesses and the economic well-being of America's farm households.
- **The National Household Food Acquisition and Purchase Survey (FoodAPS):** is the first nationally representative survey of American households to collect unique and comprehensive data about household food purchases and acquisitions.
- **Store Sales and Household Scanner Data:** Point of sale data from food stores, drugstores, mass merchandisers, dollar stores, club stores, military, and convenience stores and from household panel members scanning their purchases.





United States Department of Agriculture

ERS Data Products

- Farm income and performance
- Domestic and global food security
- Rural county classifications
- Cost of foodborne illnesses
- Food Prices
- International trade
- Agricultural productivity
- USDA Baseline Models
- Commodity cost of production
- Commodity market outlook (with WAOB)

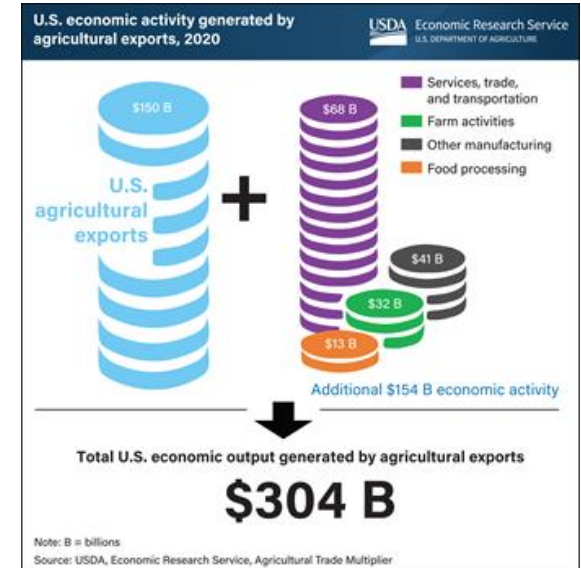
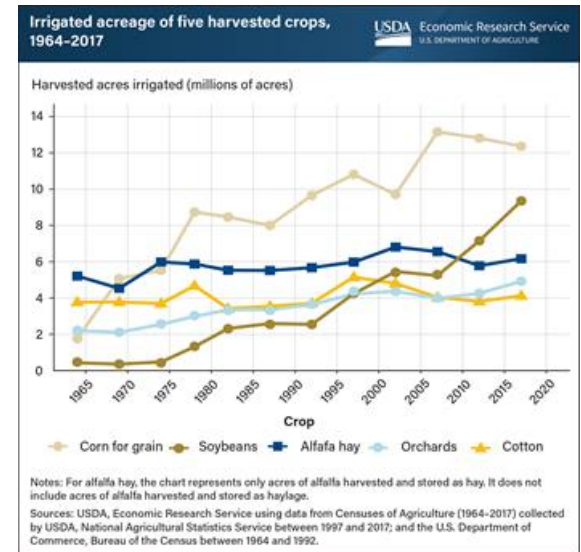


ERS Products

- **Charts of Note** provide daily snapshots of ERS research and findings. Every day, ERS Charts of Note presents a graph or map with brief accompanying text that tells a visual mini-story about food, farming or rural America.
- ➔ Now available as a mobile app!
- **Amber Waves** is an online magazine that showcases the full range of ERS research and analysis on economic and policy issues related to agriculture, food, the environment, and rural America.
- **ERS Reports** provide detailed analysis and information on a wide variety of ERS research topics.

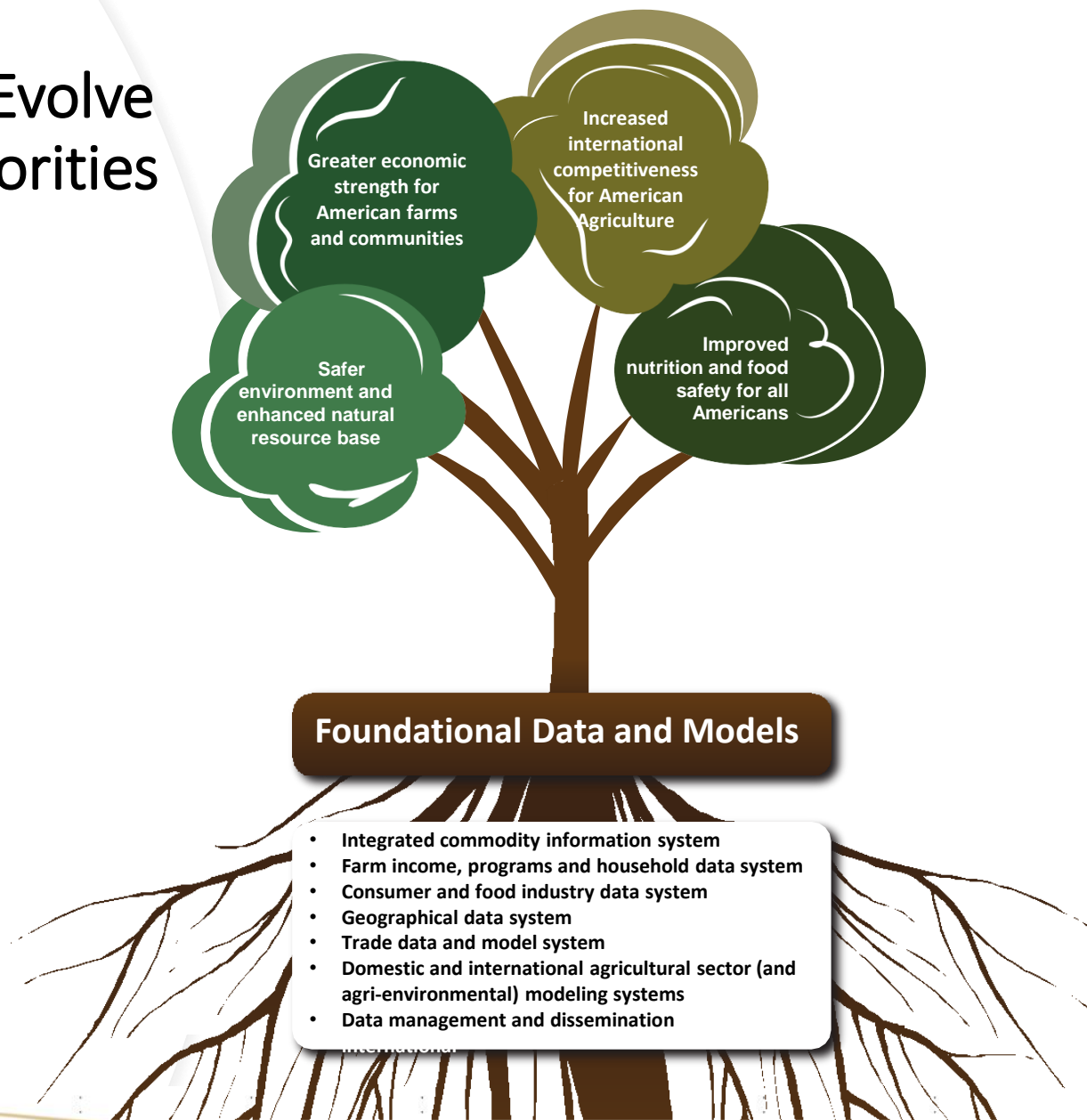
Subscribe at:

www.ers.usda.gov/subscribe



Research Programs Evolve with Stakeholder Priorities

- Enabled by a foundation of data and models
- Mission-support functions, including IT, provide critical infrastructure for the ERS website, secure access to data, Cloud computing, and more



ERS Vision & Priorities

Vision

Provide the best economic social science, analysis, & insights to advance the growth & well-being of agriculture, the environment, the food system, & rural America.

Current Priorities

COVID-19

Climate Change

Economic Growth

Racial Equity





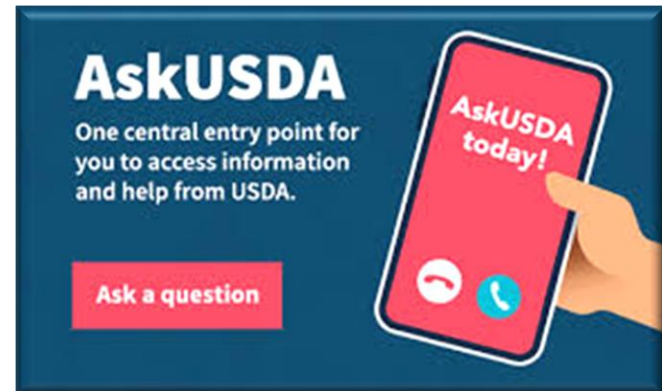
United States Department of Agriculture

Questions?

Contact:

Kelly Maguire, Ph.D.
USDA Economic Research Service
kelly.b.maguire@usda.gov
202-694-5448

Ask USDA: www.askUSDA.gov



Follow us!



www.ers.usda.gov



@USDA_ERS



linkedin.com/company/usda-economic-research-service





United States Department of Agriculture
2022 Spring Data Users' Meeting

Farm Service Agency

Mike Walter

Data Analytics Officer



United States Department of Agriculture
2022 Spring Data Users' Meeting

USDA Data Users' Meeting

April 19, 2022

AMS Market News



AMS Market News presents:

- International Markets of Interest and Areas of Collaboration
- MARS/ My Market News
- Voluntary Poultry and Egg Reporting



International Markets of Interest and Areas of Collaboration

- Selected commodity markets in key trading partners
- Partnerships and aligned efforts to enhance information availability
- Shared information products and data visualization tools



Selected Markets in Key Trading Partners

- Specialty Crops Market News
- Dairy Market News
- Livestock, Poultry and Grain Market News



Specialty Crops Market News

- Shipping Point Markets for imports
 - Over 200 commodities reported on a seasonal basis
- Terminal/Wholesale Markets reported in selected key locations
 - 12 Domestic markets
- Imports and crossings from Canada and Mexico
 - Daily volume for over 700 commodities



Specialty Crops Market News

- Added new packages, origins, and varieties to market reports
 - Newest Report – US Mexico Canada Agreement Seasonal Perishable Products Weekly Update December 2020
- SCMN started using the ACE system in 2020
- Expanded use of ACE in 2021
- Continuing to expand reporting efforts by requesting/obtaining new HTS codes



Dairy Market News

- 63 Weekly Domestic Regional Dairy Reports
- 4 Biweekly Organic Reports
- 15 Biweekly International Dairy Reports
 - Europe: Butter, butteroil, SMP, whey and WMP
 - Oceania: Butter, cheese, SMP, and WMP. Plus, Global Dairy Trade
 - South America: SMP and WMP
 - Regional Overview reports





Dairy Market News

- **Market Commentary and Pricing**
 - Price changes and market tone
 - Production and stocks trends
 - Supply/demand factors
 - Complementary products/shipping
 - Other statistics – production, stocks, exports,...



Livestock, Poultry and Grain Market News

Provides multiple reports with international information, including import, export, and slaughter data

- Import data:
 - Livestock Mandatory Reporting – Cattle and Swine
 - Imported beef
 - Feeder cattle from Mexico and feeder pigs from Canada
 - Live animal imports from Canada
 - Imported meat passed for entry into the U.S. (data is from FSIS)



Livestock, Poultry and Grain Market News

- Export data:
 - Livestock Mandatory Reporting – Pork (volume and sub primal cut details) and Beef (volume only)
 - Cattle, hogs, sheep, goats, horses, and exotics to Mexico
 - National mechanically separated chicken



Livestock, Poultry and Grain Market News

- Other International Information:
 - Canada: livestock prices, federally inspected slaughter, egg market
 - Mexico: wholesale market information for chicken
 - Japan: slaughter, supply and demand, retail prices



Livestock, Poultry and Grain Market News

- Launched Market News Mobile App in February 2022
 - Access to over 800 reports
 - Searchable
 - Planned version updates will expand commodity coverage



Partnerships and Aligned Efforts to Enhance Information Availability

Market Information Organization of the Americas (MIOA):

- A cooperative network of 33 nations, made up of the institutions that track and report on agricultural markets in those nations
- Purpose – to facilitate the timely and consistent exchange of reliable agricultural market information to the mutual benefit of the nations of the Americas



Partnerships and Aligned Efforts to Enhance Information Availability

- Challenges of international partnerships:
 - Staff and organizations can change suddenly
 - Previous training and development programs may be cancelled
 - Resources and government support are often limited
 - Divergent market practices and varied commodities of importance



Partnerships and Aligned Efforts to Enhance Information Availability

- Advantages of international partnerships:
 - A direct influence on processes and procedures
 - An awareness of emerging trends in the market
 - An opportunity to lead harmonization on products of common interest
 - Exposure to new information products and tools for data visualization



Shared Information Products and Data Visualization Tools

- Regional networks, primarily for data visualization
 - SIMMAGRO, a FAO-supported platform in use by the MIOA partners in the Central Region
 - Product Catalog/ Product Dictionary
 - Central Region's 39-product catalog, includes product characteristics, various product names, nutritional data, and trade information
- Regional Market Reports
 - Central and Southern Regions' monthly reports



Shared Information Products and Data Visualization Tools

Canadian HTS Requests

- Organic Blueberries, Fresh
- Organic Blueberries, Frozen
- Organic Natural Honey
- Organic Apples
- Organic Peppers, Bell-Type
- Organic Cucumbers, Greenhouse
- Organic Potatoes, Fresh
- Organic Maple Syrup
- Organic Red Spring Wheat
- Organic Lentils, Red Dried Shelled
- Organic Lentils, Dried Shelled
- Organic Tomatoes, Greenhouse
- Organic Tomatoes, Other than Greenhouse

USDA HTS Requests

- Green Onions
- Organic Blackberries
- Organic Raspberries
- Organic Strawberries (Entered from June 15-September 15)
- Organic Strawberries (Entered at any other time)
- Tomatillos
- Cilantro



Shared Information Products and Data Visualization Tools

- My Market News: <https://mymarketnews.ams.usda.gov/>
- Cotton and Tobacco Market News: <https://marketnews.usda.gov/mnp/cn-home>
- Dairy Market News: <https://marketnews.usda.gov/mnp/da-home>
- Specialty Crops Market News: <https://marketnews.usda.gov/mnp/fv-home>
- Livestock Poultry and Grain Market News: <https://marketnews.usda.gov/mnp/lgs-home>
- MIOA: <https://www.mioa.org/pt/>
- SIMMAGRO: <http://www.simmagro.sieca.int/public/#/home>



Voluntary Poultry and Egg Reporting

- Poultry and Egg Update
- Transitioning to My Market News
- New Format & API Capabilities
- Reporting Improvements
- MMN Reports & Data: <https://mymarketnews.ams.usda.gov/>



Voluntary Poultry and Egg Reporting

- Eggs
- Reporting Frequency
- Consolidating area and regional reporting
- Expanding and nationalizing spot market reporting
- Chicken
- Reporting Frequency
- Nationalizing chicken parts



Voluntary Poultry and Egg Reporting

- Turkey
- Reporting Frequency
- Expanding turkey parts
- Miscellaneous
- Expanding and nationalizing duck and rabbit reporting
- Consolidating several reports into a single report



Thank You

Lorie Warren
Branch Chief, MRP-AMS-DY MIB
Lorie.Warren@usda.gov

Kimberly Mercer
Assistant to the Director, SCMN
Kimberly.Mercer@usda.gov

Janet Linder
Director, DYMN
Janet.Linder@usda.gov

Jim Bernau
Field Chief, LPGMN
Jim.Bernau@usda.gov

Barbara Meredith
Director, CTMN
Barbara.Meredith@usda.gov

Jason Karwal
MARS/ My Market News
Jason.Karwal@usda.gov

Lakisha Aller
Assistant Chief, LPGMN
Lakisha.Aller@usda.gov

Carolina Quiros
Technical Coordinator, IICA/ MIOA
Carolina.Quiros@iica.int



United States Department of Agriculture
2022 Spring Data Users' Meeting

United States Census Bureau

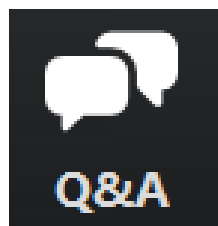
Joseph DeCampo

Section Chief

International Trade Indicator Micro Analysis Branch



Open Forum



Q&A – Questions will be answered live by our panelists

Virtual attendees can submit questions through the Q&A button.

In person attendees can move to the microphone to ask a question.